

## Sunrise Medical Seat Cushion Comparison Chart & Medicare Funding Guide

Other insurance companies may follow these guidelines, however, please refer to their specific policies for further details.

### GENERAL USE

**E2601 (width less than 22") / E2602 (width 22" or greater)**

### Medicare Coverage Criteria<sup>1</sup>

Individual qualifies for a manual or power wheelchair with sling/solid seat/back.

### Client Characteristics

- Clients needing comfort with minimal postural support
- Intact skin integrity or low risk of skin breakdown or shear
- Independent weight shifts and repositioning
- Ideal for intermittent wheelchair users

### JAY Basic



- Base: Mildly contoured 2" soft foam. Beveled bottom reduces the "hammocking" effect of upholstery, keeping the wheelchair seating surface level for improved pelvic alignment over time.
- Cover: Moisture-resistant cover with a non-slip bottom to keep the cushion in place during transfers.
- Weight Capacity: 250 lbs., 330 lbs. (22-24" widths)



## **NON-ADJUSTABLE SKIN PROTECTION E2603 (width less than 22") / E2604 (width 22" or greater)**

### **Medicare Coverage Criteria<sup>1</sup>**

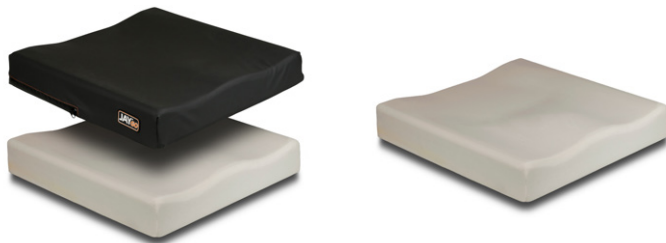
Individual qualifies for a manual or power wheelchair AND a, b, or c are met

- a. Has a current or past history of a pressure ulcer in the area of contact with the seating surface
- b. Presents with absent/impaired sensation
- c. Has inability to carry out a functional weight shift

### **Client Characteristics**

- **May be at low risk of skin breakdown**
- **May require comfortable seating surface for symmetrical alignment**
- **May require mild stability for postural support**
- **May be in a wheelchair for limited periods of time**

### **JAY GO**



- Base: Mildly contoured, dual layer foam to provide a stable base and with a soft top layer for comfort
- Cover: Dartex moisture-resistant cover
- Weight Capacity: 330 lbs., 500 lbs. (22-24" widths)

## POSITIONING

E2605 (width less than 22") / E2606 (width 22" or greater)

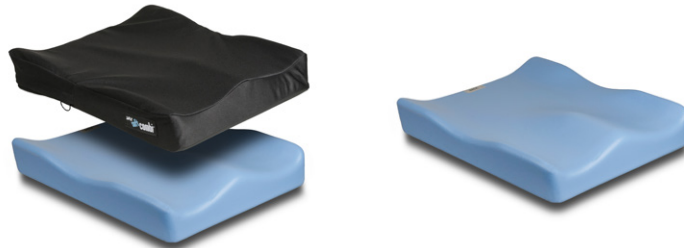
### Medicare Coverage Criteria<sup>1</sup>

Individual qualifies for a manual or power wheelchair AND has significant postural asymmetries

### Client Characteristics

- May be at low risk of skin breakdown
- Provides mild positioning support at the pelvis and thighs to improve pelvic alignment
- May increase sitting tolerance with a more comfortable seating surface
- May be in a wheelchair for limited periods of time

### JAY Soft Combi P



- Base: Moderately contoured, high resiliency coated foam (water resistant) base
- Cover: Moisture-resistant cover with non-slip bottom
- Weight Capacity: 250 lbs., 330 lbs. (22-24" widths)

## NON-ADJUSTABLE SKIN PROTECTION AND POSITIONING E2607 (width less than 22") / E2608 (width 22" or greater)

### Medicare Coverage Criteria<sup>1</sup>

Individual qualifies for a manual or power wheelchair AND a, b, OR c (Skin Protection) AND d (Positioning) are needed

- Has a past history of/or a current pressure injury on area in contact with seating surface
- Presents with absent/impaired sensation
- Has inability to carry out a functional weight shift  
AND
- Has significant postural asymmetries

### Client Characteristics

- **Moderate to high risk for skin breakdown (may have protruding bony prominence on sitting surface, may have impaired or absent sensation, muscles may be getting weaker, skin is aging, has poor nutrition, has some orthopedic deformities)**
- **May be unable to perform functional weight shifts (skin protection feature provides pressure distribution and shear reduction)**
- **May have moderate positioning needs**
- **May require a comfortable seating surface to increase seated tolerance**
- **May be in a wheelchair for extended periods (uses a wheelchair for their primary way of getting around)**

JAY ZIP	JAY ION	JAY UNION	JAY EASY	RIDE FORWARD
				

## NON-ADJUSTABLE SKIN PROTECTION AND POSITIONING E2607 (width less than 22") / E2608 (width 22" or greater)

<b>JAY ZIP</b>	<b>JAY ION</b>	<b>JAY UNION</b>	<b>JAY EASY</b>	<b>RIDE FORWARD</b>
<ul style="list-style-type: none"> <li>• Designed for pediatric clients (1.2 lbs., available in 8" width/depth, 2.75" height)</li> <li>• Base: Soft foam base with optimized firmness by cushion width, soft Visco memory foam top layer</li> <li>• Cover: Standard with 1 inner (water resistant) and 2 outer covers (4-way Stretch material with anti-microbial Ionic+)</li> <li>• Weight Capacity: 165 lbs</li> </ul>	<ul style="list-style-type: none"> <li>• Base: Multi-layered foam with varying firmness depending on size, soft Visco memory foam top</li> <li>• Cover: Standard with 1 inner (water resistant) and outer covers (4-way Stretch material with anti-microbial Ionic+)</li> <li>• Weight Capacity: 330 lbs., 500 lbs. (22-24" widths)</li> </ul>	<ul style="list-style-type: none"> <li>• Base: Multi-layered foam with JAY Flow Fluid tripad in the pelvic loading area, gel-infused Visco memory foam top layer, moderately contoured with additional lateral &amp; pelvic support</li> <li>• Cover: Standard with 1 inner (water resistant) and outer covers (4-way Stretch material with anti- microbial Ionic+)</li> <li>• Available in standard 4.5" cushion height or reduced profile 3.5"</li> <li>• Weight Capacity: 330 lbs., 500 lbs. (22-24" widths)</li> </ul>	<ul style="list-style-type: none"> <li>• Base: Moderately pre-contoured, high-resiliency foam base with a JAY Flow Fluid tripad insert</li> <li>• Cover: Moisture-resistant cover with non-slip bottom</li> <li>• Available in a flat or curved bottom to reduce the "hammocking" effect of sling upholstery</li> <li>• Weight Capacity: 330 lbs.</li> </ul>	<ul style="list-style-type: none"> <li>• Base: Visco-elastic foam over polyurethane foam base surrounds the pelvis with anatomically correct contours while reducing pressure around at-risk bony prominences. The seating interface is immersion/envelopment</li> <li>• Cover: Inner polyester fabric with urethane moisture-protecting backing, outer light-weight breathable polyester spacer mesh fabric</li> <li>• Optional Ride CAM Wedges added to promote a more upright posture and decrease ischial pressure or asymmetrically to help level a flexible pelvic obliquity.</li> <li>• Weight Capacity: 350 lbs.</li> </ul>

## ADJUSTABLE SKIN PROTECTION

### E2622 (width less than 22") / E2623 (width 22" or greater)

The adjustment may be in the manner of direct addition or removal of the fluid (e.g. add or remove air) or indirectly by addition or removal of packets of fluid.

## Medicare Coverage Criteria<sup>1</sup>

Individual qualifies for a manual or power wheelchair AND a, b, or c are met

- Has a current or past history of a pressure ulcer in the area of contact with the seating surface
- Presents with absent/impaired sensation
- Has inability to carry out a functional weight shift

## Client Characteristics

- May be at high risk of skin breakdown
- Changing positioning needs due to weight loss/gain, change in tone, etc. requiring enhanced skin protection
- May not be able to perform independent weight shifts
- May have moderate positioning needs
- May be in a wheelchair for extended periods of time

JAY Fusion



JAY J2



JAY J2 Deep Contour



JAY X2



JAY GS



JAY LitePro



## ADJUSTABLE SKIN PROTECTION E2622 (width less than 22") / E2623 (width 22" or greater)

<b>JAY Fusion</b>	<b>JAY J2</b>	<b>JAY J2 Deep Con- tour</b>	<b>JAY X2</b>	<b>JAY GS</b>	<b>JAY LitePro</b>
<ul style="list-style-type: none"> <li>· Base: Pre-contoured closed cell foam base with a high resiliency foam top layer.</li> <li>· Optional inserts include JAY Flow Fluid tripad, Air (single or dual valve), JAY Cryo Fluid</li> <li>· JAY CryoFluid offers optimal skin protection addressing pressure, shear, temperature and moisture.</li> <li>· Available in a standard height of 4" or a reduced profile 3".</li> <li>· Cover: Standard with inner (water resistant) and outer cover (4- way stretch material with anti-microbial Ionic+. Inner layer of spacer fabric helps to promote airflow.)</li> <li>· Weight Capacity: 330 lbs., 500 lbs. (22-24" width)</li> </ul>	<ul style="list-style-type: none"> <li>· Base: Pre-contoured closed-cell foam provides lateral and forward stability. Has a JAY Flow Fluid tripad which consistently ensures proper fluid placement by reducing fluid migration.</li> <li>· 2.5" overall cushion height with 2" deep pelvic loading area</li> <li>· Cover: stretch, 3DX or incontinence outer cover options</li> <li>· Weight Capacity: 330 lbs., 500 lbs. (22-24" width)</li> </ul>	<ul style="list-style-type: none"> <li>· Base: Pre-contoured closed cell foam with a JAY Flow Fluid tripad with increased fluid volume</li> <li>· 4.5" overall cushion height with 3" deep pelvic loading area</li> <li>· For individuals requiring greater immersion and increased skin protection</li> <li>· Cover: stretch, 3DX, or incontinence outer cover options</li> <li>· Weight Capacity: 330 lbs., 500 lbs. (22-24" width)</li> </ul>	<ul style="list-style-type: none"> <li>· E2622 Only</li> <li>· Base: Non-contoured high resiliency foam which allows forward sitting and enhances independence during ADLs for active users</li> <li>· JAY Flow fluid tripad and rear coccyx notch which reduces peak pressure and reduces the risk of skin breakdown during movement</li> <li>· 2.25" Cushion height</li> <li>· Cover: Standard with 1 inner (water resistant) and 4-way stretch outer cover</li> <li>· Weight Capacity: 330 lbs.</li> </ul>	<ul style="list-style-type: none"> <li>· E2622 Only</li> <li>· Base: Incorporates a highly durable, stable closed cell foam base and JAY Flow Fluid compartmentalized pad with the unique ability to grow with the client while maintaining skin protection</li> <li>· Features adjustable well placement using included shelf extension</li> <li>· Standard contracture cutouts</li> <li>· Built-in growth for pediatric clients</li> <li>· Cover: 4-way stretch with anti-microbial Ionic+. Inner layer of spacer fabric helps to promote airflow</li> <li>· Weight Capacity: 330 lbs.</li> </ul>	<ul style="list-style-type: none"> <li>· Base: Pre-contoured closed cell foam base with multi-directional ventilation channels</li> <li>· Multizone elastomer insert with pressure adjustment pod options (none, standard, and firm)</li> <li>· High pressure management with increased stability, low maintenance, and easy to clean</li> <li>· 2 lbs. and only 2" overall cushion height, one of the lightest and lowest on the market</li> <li>· Cover: AirExchange microclimate outer cover with durable side bands and non-slip mesh bottom. An optional water-resistant cover is available.</li> <li>· Weight Capacity: 330 lbs.</li> </ul>

## ADJUSTABLE SKIN PROTECTION AND POSITIONING E2624 (width less than 22") / E2625 (width 22" or greater)

An adjustable skin protection and positioning seat cushion (E2624/ E2625) has all the characteristics of an E2607/ E2608 cushion and is determined to be adjustable by the PDAC. The adjustability feature only relates to the skin protection properties of the cushion. The adjustment may be in the manner of direct addition or removal of the fluid (i.e., add or remove air) or indirectly by addition or removal of packets of fluid.

### Medicare Coverage Criteria<sup>1</sup>

Individual qualifies for a manual or power wheelchair AND a, b, OR c (Skin Protection) AND d (Positioning) are needed

- Has a current or past history of a pressure ulcer in the area of contact with the seating surface
- Presents with absent/impaired sensation
- Has inability to carry out a functional weight shift  
AND
- Has significant postural asymmetries

### Client Characteristics

- May be at high risk of skin breakdown
- May be unable to perform functional weight shifts
- May have moderate positioning needs due to postural asymmetries (reducible/non-reducible)
- May be in a wheelchair for extended periods of time
- May experience weight loss



## ADJUSTABLE SKIN PROTECTION AND POSITIONING

### E2624 (width less than 22") / E2625 (width 22" or greater)

<b>JAY Fusion with Positioning</b>	<b>JAY J2 with Positioning</b>	<b>JAY J2 Deep Contour with Positioning</b>	<b>JAY GS with Positioning (E2624 Only)</b>	<b>RIDE Java (E2624 Only)</b>
<ul style="list-style-type: none"> <li>• Base: Pre-contoured closed cell foam base with a high resiliency foam top layer</li> <li>• Optional inserts include JAY Flow Fluid tripad, Air (single or dual valve), JAY CryoFluid</li> <li>• JAY CryoFluid offers optimal skin protection addressing pressure, shear, temperature and moisture</li> <li>• Available in a standard height of 4" or a reduced profile 3"</li> <li>• Positioning supports include a pair of 1" adductors/lateral supports, pair of 1" hip guides, and a 1" medial thigh support</li> <li>• Cover: Standard with inner (water resistant) and outer cover (4-way stretch material with anti-microbial Ionic+. Inner layer of spacer fabric helps to promote airflow.)</li> <li>• Weight Capacity: 330 lbs., 500 lbs. (22-24" width)</li> </ul>	<ul style="list-style-type: none"> <li>• Base: Pre-contoured closed-cell foam provides lateral and forward stability.</li> <li>• JAY Flow Fluid tripad which consistently ensures proper fluid placement by reducing fluid migration</li> <li>• 2.5" overall cushion height with 2" deep pelvic loading area</li> <li>• Positioning supports include a pair of 1" lateral thigh supports</li> <li>• Cover: stretch, 3DX or incontinence outer cover options</li> <li>• Weight Capacity: 330 lbs., 500 lbs. (22-24" width)</li> </ul>	<ul style="list-style-type: none"> <li>• Base: Pre-contoured closed cell foam with a JAY Flow Fluid tripad with increased fluid volume</li> <li>• 4.5" overall cushion height with 3" deep pelvic loading area</li> <li>• For individuals requiring greater immersion and increased skin protection and stability</li> <li>• Positioning supports include a pair of 1" lateral thigh supports</li> <li>• Cover: stretch, 3DX, or incontinence outer cover options</li> <li>• Weight Capacity: 330 lbs., 500 lbs. (22-24" width)</li> </ul>	<ul style="list-style-type: none"> <li>• Base: Incorporates a highly durable, stable closed cell foam base and JAY Flow Fluid compartmentalized pad with the unique ability to grow with the client</li> <li>• Features adjustable well placement using included shelf extension</li> <li>• Available in two positioning versions: 2" or 3"</li> <li>• Positioning supports include a pair of pelvic lateral supports, a pair of lateral thigh supports, and a medial thigh support with standard contracture cutouts</li> <li>• Highly durable and can be easily modified in the field</li> <li>• Built-in growth for pediatric clients</li> <li>• Cover: 4-way stretch material with anti-microbial Ionic+ inner layer of spacer fabric helps to promote air flow</li> <li>• Weight Capacity: 330 lbs.</li> </ul>	<ul style="list-style-type: none"> <li>• Base: Pre-contoured firm closed-cell foam base, with soft open-cell foam overlay covered with ventilated Polyether TPU Film, assists to redistribute the forces of pressure and shear away from high-risk areas, while selectively applying the forces to areas more tolerant. Vented and contoured shape assists to keep skin cool and dry. The seating interface is offloading</li> <li>• Cover: Lightweight breathable spandex and polyester spacer mesh fabric</li> <li>• Optional Ride CAM Wedges added to promote a more upright posture and decrease ischial pressure or asymmetrically to help level a flexible pelvic obliquity.</li> <li>• Weight Capacity: 350 lbs.</li> </ul>

## CUSTOM E2609 (any size)

### Medicare Coverage Criteria<sup>1</sup>

Individual qualifies for a manual or power wheelchair AND a, AND b, c, (Skin Protection) OR d (Positioning) are needed

- Written comprehensive evaluation by a licensed/certified medical professional, such as PT or OT stating why a pre-fabricated cushion is insufficient
- Has a current or past history of a pressure ulcer in the area of contact with the seating surface
- Presents with absent/impaired sensation or inability to carry out functional weight shift
- Has significant postural asymmetries

### Client Characteristics

- **May be at moderate to high risk of skin injury, have current skin injury, or have past history of having a skin injury**
- **May have positioning needs due to significant postural asymmetries/tendencies (reducible/non-reducible)**
- **Has absent/impaired sensation**
- **May have an inability to carry out functional weight shift**
- **May be in a wheelchair for extended periods of time**

**JAY SureFit**



**JAY Fit**



**Ride Custom  
AccuSoft**



**Ride Custom 2**



**Ride Custom AccuSoft  
Made-From-Measurements**



**CUSTOM  
E2609 (any size)**

<b>JAY SureFit</b>	<b>JAY Fit</b>	<b>Ride Custom AccuSoft</b>	<b>Ride Custom 2</b>	<b>Ride Custom Accusoft Made-From-Measurements</b>
<ul style="list-style-type: none"> <li>• Made-to-order seating solution: cushion is fabricated to specific client measurements and is available in a variety of options and colors</li> <li>• Can specialize cushion to include modifications such as anti-thrust, split seat, leg length difference, built-in obliquity modifications, built-in medial and lateral supports, and more.</li> <li>• WC-20 Transit tested and approved when combined with a Quickie or ZIPPPIE WC-19 Transit compliant mobility base.</li> <li>• Able to be bundled with QUICKIE or ZIPPPIE wheelchair frames, so both products can be built and tested for compatibility before shipping</li> <li>• Made to order with an online configurator</li> <li>• Cover: Outer cover is available in Vinyl, stretch, Cordura, Nylon or 3DX material</li> <li>• Weight capacity: 250 lbs. (non-transit), 300 lbs. (non-transit-HD), 200 lbs. (Transit: Min. 48 lbs.)</li> </ul>	<ul style="list-style-type: none"> <li>• Semi-personalized seating includes multiple sizes and various well insert types. Includes foam options for all layers of cushion foam, and optional lateral and anterior well reducers, adjustable lateral pelvic supports, and adjustable lateral thigh support</li> <li>• Cover options: 3DX with Black stretch or Reverse Dartex</li> <li>• Weight Capacity: 250 lbs.</li> </ul>	<ul style="list-style-type: none"> <li>• Base: Custom contoured shape with a softer, more forgiving sitting surface made of polyurethane foam</li> <li>• Options to contour to reduce forces at high-risk areas and provide slightly greater forces at low-risk areas.</li> <li>• Full contact option surrounds the pelvis with supportive contours distributing pressures throughout the seating surface.</li> <li>• Seating interface: immersion/envelopment. Available in soft and extra soft foam</li> <li>• Cover: Inner wipe-able polyester fabric with a polyurethane coating, lightweight breathable polyester spacer mesh fabric with optional breathable spandex overlay</li> <li>• Weight Capacity: 250 lbs. (under 20"), 300 lbs. (over 20" wide)</li> </ul>	<ul style="list-style-type: none"> <li>• Base: Custom contoured shape polyethylene base (closed cell) redistributes the forces of pressure and shear away from high-risk areas</li> <li>• Selectively applies forces to more tolerant areas</li> <li>• Vented and contoured shape assists in keeping skin cool and dry</li> <li>• Decreases long-term skin risk and aids in sitting stability for improved functional performance</li> <li>• Seating interface: off-loading is standard, options of reticulated foam well insert kit and full contact (manufactured as captured)</li> <li>• Cover: Lightweight breathable polyester spacer mesh fabric with optional breathable spandex overlay, optional additional soft fit options for softer overlay interface</li> <li>• Weight Capacity: 250 lbs. (under 20"), 300 lbs. (over 20" wide)</li> </ul>	<ul style="list-style-type: none"> <li>• Made-to-order system fabricated from riders measurements. Does not require Ride certification to order</li> <li>• Base: Customized full contact linear seating surface made of polyurethane foam</li> <li>• Seating interface: immersion/envelopment</li> <li>• Built-in thigh/femoral support and medial thigh available</li> <li>• Ability to add in minor pelvic obliquity build up using wedges in posterior cushion</li> <li>• Cover: Inner wipe-able polyester fabric with a polyurethane coating, lightweight breathable polyester spacer mesh fabric with optional breathable spandex overlay</li> <li>• Weight Capacity: 250 lbs. (under 20"), 300 lbs. (over 20" wide)</li> </ul>

## Sunrise Medical Seat Cushion Comparison Chart & Medicare Funding Guide



Choosing and justifying the correct cushion is critical for the health and well-being of a client. JAY Your Way allows for personalized modifications to JAY products, ensuring they meet the specific comfort and positioning needs of clients while maintaining the ease of ordering standard products.

With JAY Your Way, make clinical improvements such as size and base adjustments, fluid insert modifications, and add positioning components. Additionally, you can customize the appearance with colored covers and back shells. These, along with many other modifications help address unique individual needs and preferences without changing the original cushion code.

Learn more: <https://www.SunriseMedical.com/JYW>

### REFERENCES:

1. Article - Wheelchair Seating - Policy Article (A52505) (cms.gov)  
<https://www.cms.gov/medicare-coverage-database/view/article.aspx?articleid=52505&ver=74&Ctrctr=All&UpdatePeriod=837>

(Page 12 of 12)

**DISCLAIMER: FOR PROFESSIONAL USE ONLY. THIS DOCUMENT (AND THE WEBSITE REFERENCED HEREIN) DO NOT PROVIDE MEDICAL ADVICE.** Sunrise Medical (US) LLC does not provide clinician services. The information contained on this document (and the website referenced herein), including, but not limited to, the text, graphics, images, and descriptions, are for informational purposes only and should be utilized as a general resource for clinicians and suppliers to then use clinical reasoning skills to determine optimal seating and mobility solutions for individual patients. No material on this document (or on the website) is intended to be used as (or a substitute for) professional medical advice, diagnosis or treatment. Clinicians should adhere to their professional medical training and their institution's or practice's recommended guidelines. Reliance on this document (and the information contained herein) is solely at your own risk.